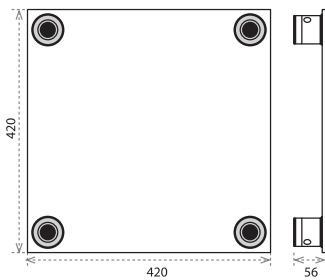
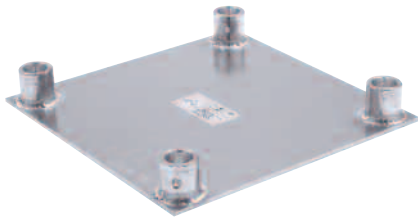
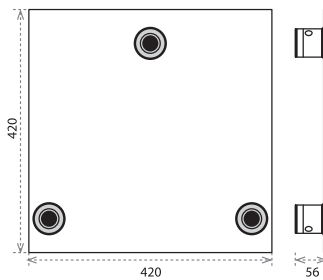
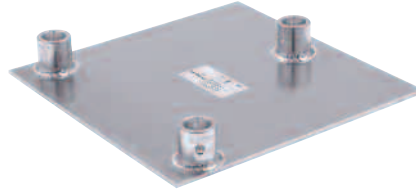


Accessories

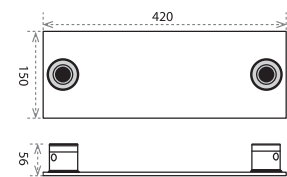
Base Plates for all HD / FD Systems



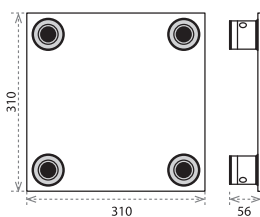
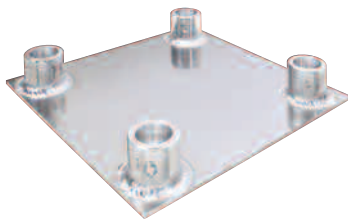
PLB-44
Base Plate



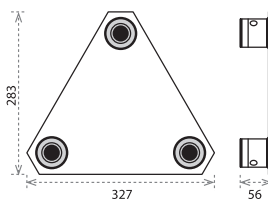
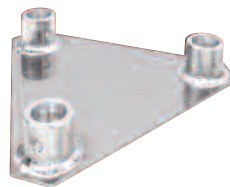
PLB-43
Base Plate



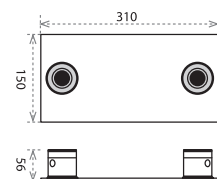
PLB-42
Base Plate



PLB-34
Base Plate



PLB-33
Base Plate



PLB-32
Base Plate

Base Plates

For each Truss System Eurotruss supplies a base plate. The base plate is an aluminium plate with fixed welded receivers on it.

The plate is for FD System 6mm (0,24in) thick and for heavier truss systems 8~10mm (0,31~0,39in) thick. A base plate can also be used as a wall plate or end plate.