



Eurotruss Stage Decks Series

Over the years Eurotruss developed a Stage Deck series that changed into an independent product range. We developed a staging system that is portable, durable and extendable. The Stage Deck Series can be used in a variety of configurations, can be built with a none or sometimes a small number of tools and comes with a complete range of accessories.

The Eurotruss Stage Deck combines strength and durability. With its weight of only 3,2 lbs/sqft (16kg/m²), it is one of the lightest and strongest decks in the industry. The guaranteed load capacity of 150 lbs/sqft on an 8x4ft Deck and 750 kg/m² on a 2x1 m Deck.

A special long centered steel profile ensures full stability and a 45% less deflection. The Pro Deck is a base for stages, fashion show catwalks, tribunes, and conference podiums.

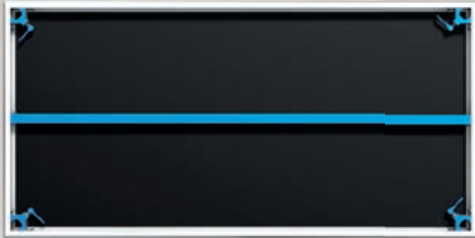
All accessories (self-leveling inserts, barrier clamps, stairs clamps or assembly inserts which can be used to hang curtains or advertising banners) are fastened to the section. The platform top is made of waterproof plywood with an anti-slip layer which is standard available in black.

You can also choose for a basic plywood deck in multiple colors and even glossy white, black and transparent decks are available in all imperial and metric sizes.

The platforms can be supported by non-adjustable or telescopic legs which make it possible to smoothly and precisely adjust the platform height within 5 different height ranges. Thanks to their structure, the platforms can be installed both, outdoors in different terrains and indoors (inside the buildings, show halls, theatres, etc.).

Introduction Stage Decks

Eurotruss Stage Decks are based on a special extruded aluminium profile that is completed with steel beam across the longer side of the deck. The top layer is bolted and glued to the extruded frame to reduce and prevent unwanted noise and vibrations. All Eurotruss Stage Decks are available in metric and imperial dimensions. Take a look at the distinguishing features.



Solid and robust design

A longitudinal beam and a special steel profile design ensures full stability and minimum deflection than other brands in the market. The deflection has been reduced with 45%.

A TÜV certificate and structural reports ensuring maximum safety confirm this high quality.



Corner Leg Holder

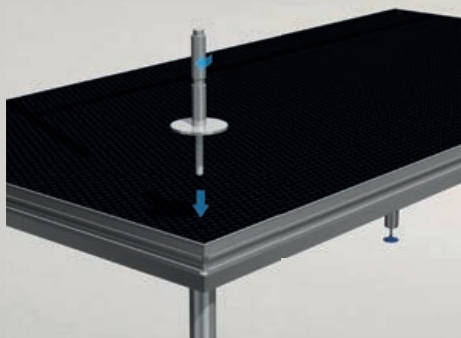
The aluminum corner makes a solid leg connection possible; with an easy flip of the quick-lock lever system, the leg connection stays fixated during the build-up. You will find many leg holders at various brands made of 2 pieces and equipped with a knob. We designed this by a single solid corner cube with a quick-lock handle. Not only easier to use but also offers a better connection to secure the legs.

The decks are designed to be supported by fixed, light adjustable and/or telescopic legs which make it possible to raise the platform to the desired height.



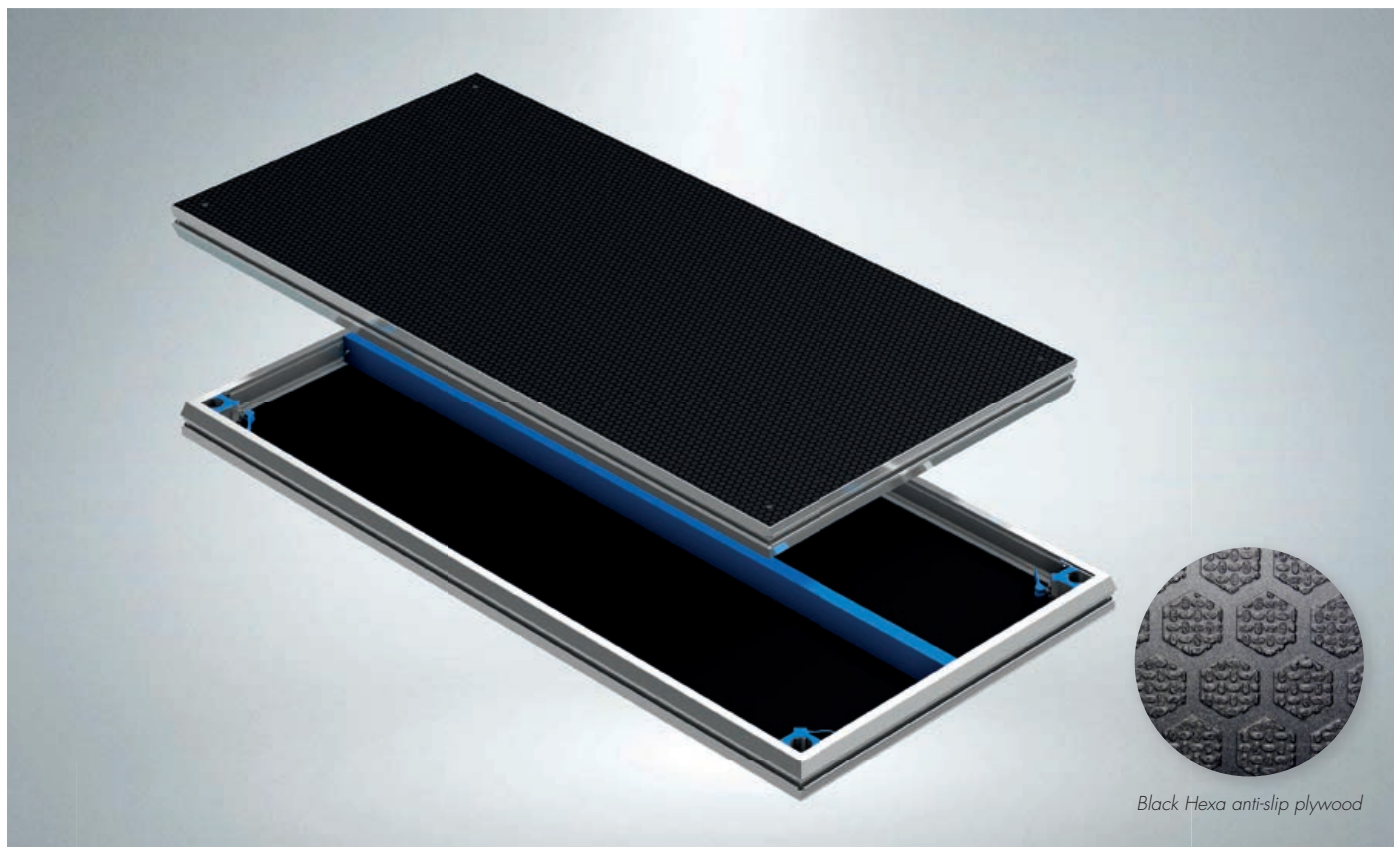
Special profile

The Eurotruss Stage Decks has its own special extruded profile. All accessories like self-leveling inserts, railing clamps, stairs, clamps or assembly inserts which can be used to hang curtains or advertising banners are fastened to the profile section.



Mount inside the deck

Standard handrails can be mounted inside (on top of the stage). It gives it a very professional look and feel when it comes to building stages and as the profile on the side on the deck is not used for this type of handrails, it gives you the possibility to mount other accessories on the side of the deck such as kick toe boards or skirting profiles.



Black Hexa anti-slip plywood

Pro Deck

Eurotruss is proud to present the latest Deck Series. This model combines strength and durability. With its weight of only 16kg/m² (3,2 lbs/sqft) it is one of the lightest and strongest decks in the industry. Guaranteed load capacity of 750 kg/m² on a 2x1 m Deck and 150 lbs/sqft on a 8x4ft Deck.

A special long centered steel profile ensures full stability and a 45% less deflection. The Pro Deck is a base for stages, fashion show catwalks, tribunes and conference podiums. All accessories (self-levelling inserts, barrier clamps, stairs clamps or assembly inserts which can be used to hang curtains or advertising banners) are fastened to the section: The platform top is made of waterproof plywood with an anti-slip layer which is standard available in black.

You can also choose for a basic plywood deck in multiple colors and even glossy white, black and transparent decks are available in all imperial and metric sizes.

The platforms can be supported by non-adjustable or telescopic legs which make it possible to smoothly and precisely adjust the platform height within 5 different height ranges. Thanks to their structure, the platforms can be installed both, outdoors in different terrains and indoors (inside the buildings, show halls, theatres etc.).

Facts

- Lightweight, weighs only 19kg p/m² , / 3,2 lbs/sqft
- Loading vertical: 750 kg/m² , / 150 lbs/sqft (static approved)
- Loading according DIN 15921
- Equipped with Black Hexa anti-slip Plywood
- Applicable on Scaffolding
- TÜV approved and structural report available

Specifications Standard Size

	Metric	Imperial
Dimensions:	2x1 m.	8x4 ft.
Profile Height:	90 mm.	3,54 in.
Plywood:	12 mm. (Anti-slip)	0,47 in. (Anti-slip)
Weight:	38 kg. (200 x 100 cm.)	101 lbs (8x4ft.)
Material:	EN AW-6082 T6 and Plywood	

Pro Deck



Pro Deck Metric

The popular Eurotruss Pro Deck in Metric sizing, 100% compatible with the existing Eurotruss Decks.

Pro Deck Imperial Size

Productcode	Size
<i>ED-T-750-2x1</i>	2 x 1 m.
<i>ED-T-750-1x1</i>	1 x 1 m.
<i>ED-T-750-2x0,5</i>	2 x 0,5 m.
<i>ED-T-750-1x0,5</i>	1 x 0,5 m.



Pro Deck Imperial

The popular Eurotruss Pro Deck in Imperial sizing, 100% compatible with the existing Eurotruss Decks.

Pro Deck Imperial Size

Productcode	Size
<i>ED-T-750-8x4</i>	8 ft x 4 ft.
<i>ED-T-750-4x4</i>	4 ft x 4 ft.
<i>ED-T-750-8x2</i>	8 ft x 2 ft.
<i>ED-T-750-4x2</i>	4 ft x 2 ft.