

- [Introduction](#)
 - [Compliance](#)
 - [Revisions](#)
- [Warnings & Safety](#)
- [Ethernet Connection](#)
- [Power](#)
- [DMX Outputs](#)
- [Merging](#)
- [Configuration](#)
 - [Web Server](#)
 - [DMX Workshop](#)
 - [Squawk](#)
- [LED Indication](#)
- [Mechanical](#)
- [Support](#)



Gateway 4 provides flexible DMX / RDM data distribution, converting four universes of Ethernet (sACN or Art-Net) into DMX512/RDM. The unit can be desk mounted or safely secured to a vertical or horizontal bar by adding a standard clamp onto one of two m10 mounting positions.

Gateway 4 is fully compatible with the latest protocols (sACN, Art-Net 4, LLRP, DMX & RDM), ensuring your distribution network is ready to meet your future demands. Gateway 4 is appropriate for permanent installations or as a flexible, adaptable rental & touring tool due to its compact, rugged and scratch-resistant metal design.

When combined with any ZerOS console, Gateway 4 provides on-board configuration from the console, for a truly integrated system. Alternatively, the unit can be configured through an internal web server or via optional control software. DHCP enables automatic IP addressing; static IP and LLRP negotiation are also supported.

Gateway 4 is ideal for use alongside [Splitter 8](#) and [Gateway 8](#) to build a larger data distribution system.

[Please read this manual before use, especially the Warnings & Safety section.](#)

E&OE. Cooper Lighting Solutions reserves the right to make changes to the equipment and specification described in this manual without prior notice.

Introduction

Thank you

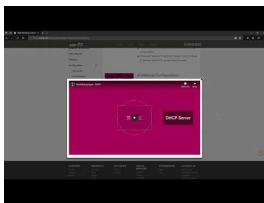
Thank you for choosing Gateway 4 by Zero 88 to fulfil your data distribution needs. We sincerely hope that your new product will bring you years of trouble-free service. We make great efforts to build in reliability and serviceability at every stage of our development and production processes and include a three-year limited warranty - giving you peace of mind for your investment.

Our extensive dealer network can also provide you with technical service and sales support in your local language no matter where you are in the world. If you have any questions, comments or problems our contact details can be found at zero88.com/support

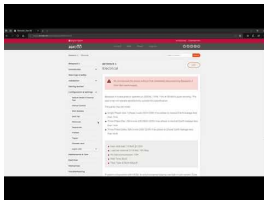
Once again, thank you for choosing Zero 88.

This manual

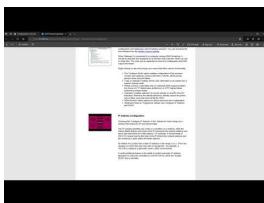
This online manual describes the operation of Gateway 4.



For an overview of the Zero 88 Online Manuals, take a look at this video.



For detailed information on each function, the manual has been divided into chapters - one for each major area, which can be navigated using the menu on the left-hand side. You can also search the manual using the search bar top right.



Each section or whole chapters can be exported to PDF by tapping "PDF", found just below the search bar. The whole manual can be exported as a PDF, by tapping "PDF" at the top page of the manual.

Zero 88 online manuals are updated regularly to ensure you have all the relevant information and useful tips. Check out the Revisions section to see what has been added. If you see something that doesn't look right, or have suggestions, please send us an email to support@zero88.com.

Compliance

Gateway 4 complies with the following standards:

- BS EN IEC 62368-1:2020+A11:2020. DMX is defined as Energy Source 1 (SELV)

Revisions

Change log of this manual

- November 2020 - DE added - ES
- July 2020 - Manual Restructured - ES
- June 2020 - Manual Created - ES

Warnings & Safety

- No user serviceable parts inside.
- This equipment is designed for professional stage lighting control and is unsuitable for any other purpose. It should be used by, or under the supervision of, an appropriately qualified or trained person.
- Please reference wiring instructions if using external PSU. Gateway 4 is **not** compatible with Zero 88's legacy console PSUs.

Zero 88 networking devices are designed for use within a dedicated, stand alone, private, local area network only, for the sole purpose of transmitting and/or receiving nonsensitive entertainment lighting control data. Although they utilize Ethernet networking, these devices should not be connected to the internet.

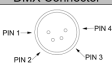
Ethernet Connection

Gateway 4 has an RJ45 (etherCON) connector and supports Art-Net 4 and sACN (ESTA E1.31). Gateway 4 requires Cat 5 cable or better and supports 10BaseT and 100BaseT.

Power

Gateway 4 can be powered from either an external PSU (9-48 VDC) or with PoE. The latter requires a suitable Ethernet switch for the power source.

Please reference wiring instructions if using external PSU. Gateway 4 is **not** compatible with Zero 88's legacy console PSUs.

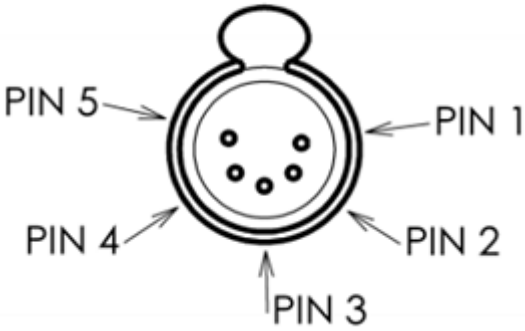
DMX Connector	Pin	Description
	1	0 VDC
	2	Not Connected
	3	Not Connected
	4	9-48 VDC

Please note that the product should be powered via EITHER the DC power input or Ethernet PoE, but not both (there is no option to fail-over from one power source to the other if both are connected).

DMX Outputs

Gateway 4 can output a maximum of four Universes of DMX512 data. There are four DMX/RDM output ports with female XLR5 connectors.

If network data or connectivity is lost, the device will hold last state.

DMX Connector	Pin	Description
	1	COM
	2	DMX -
	3	DMX +
	4	Not Connected
	5	Not Connected

Universe Addressing

The universe (Port Address) is used to uniquely identify the DMX data on the network. Art-Net allows universe numbers in the range 0-32767. sACN allows universe numbering in the range 1 - 63999.

For the avoidance of cross-protocol confusion, users are advised to number universes from 1.

sACN universes 0 & 64000 - 65535 are reserved.
When configuring sACN port numbers using Art-Net, you will not be able to configure between 32768 - 65535.

Merging

Gateway 4 can merge two streams of data to a DMX output. Depending on the settings, merge can operate as HTP/LTP or Priority.

In HTP (highest takes precedence), the levels of each channel in the two streams are compared and the highest value is used.

In LTP (latest takes precedence), the levels of each channel in the two streams is compared to the output; if there is a change, that level is output.

In Priority, the sACN Priority field defines which universe will be output.

Merging with...

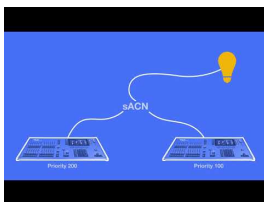
- [Art-Net](#)
- [sACN](#)

	Source A	Source B	Condition	Output
1	Art-Net	Art-Net	Different IP addresses	Merge of A + B*
2	sACN	sACN	Identical priorities	Merge of A + B*
3	sACN	sACN	Different priorities	Highest priority

*HTP or LTP as per user selection

Art-Net

If two streams from different IP addresses are directed to the same Port-Address, merging will occur. If more streams are directed to the same Port-Address, they will be ignored.



sACN

Merging can operate with both unicast and multicast data.

If two streams from different IP addresses are directed to the same universe, the priority field is checked and the stream with the highest priority is output. If the priority field in both streams is identical, merging will occur.

If additional stream(s) are directed to the same universe, any additional stream with higher priority will take precedence. If the priority is identical to the merging streams, it will be ignored.

Configuration

Configuration is achieved via the internal web server or via Art-Net. In order to restore the product to its factory default state, hold down the reset button and cycle the power.

Web Server

To configure Gateway 4 via the internal web-server, either type in the IP address of the product or, if your web-browser supports NetBios, type "Gateway4". To find the IP address, use DMX-Workshop.

The screenshot displays the web interface for Zero 88 Gateway 4. The top header features the Zero 88 logo and the product name 'Zero 88 Gateway 4 (Zero 88 Gateway 4)'. The main content is divided into three sections: IP Settings, Port Settings, and Advanced Information. The IP Settings section includes an 'Edit' button, a dropdown for 'IP Address Mode' set to 'DHCP', and fields for 'IP 192.168.0.34', 'Subnet Mask 255.255.255.0', and 'Gateway 192.168.0.1'. To the right are three status indicators: 'Online' (green), 'Power' (green), and 'Net' (green). The Port Settings section is a table with columns for Port, DMX, RDM, Delta, Universe, Rate, Protocol, Merge, and Label. All four ports are configured with DMX, RDM, and Art-Net protocols. The Advanced Information section is currently collapsed.

Port	DMX	RDM	Delta	Universe	Rate	Protocol	Merge	Label
1	<input checked="" type="checkbox"/>	<input checked="" type="checkbox"/>	<input type="checkbox"/>	1	High	Art-Net	HTP	Port 1
2	<input checked="" type="checkbox"/>	<input checked="" type="checkbox"/>	<input type="checkbox"/>	2	High	Art-Net	HTP	Port 2
3	<input checked="" type="checkbox"/>	<input checked="" type="checkbox"/>	<input type="checkbox"/>	3	High	Art-Net	HTP	Port 3
4	<input checked="" type="checkbox"/>	<input checked="" type="checkbox"/>	<input type="checkbox"/>	4	High	Art-Net	HTP	Port 4



IP Settings

The IP settings for the product are displayed in the top section of the screen. The Edit control allows the static IP, subnet mask and gateway to be configured. DHCP operation can be selected via DMX-Workshop.

The indicator meanings are as follows:

- Online: Green = live connection between browser & product; Red = connection lost
- Power: Green = powered; Flashing green = Identify; Red = Fault
- Net: Yellow = Link; Green = Art-Net or sACN activity

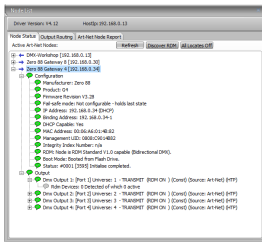
Port	DMX	RDM	Delta	Universe	Rate	Protocol	Merge	Label
1	<input checked="" type="checkbox"/>	<input type="checkbox"/>	<input type="checkbox"/>	High	Low	Art-Net	HTP	Port 1
2	<input checked="" type="checkbox"/>	<input type="checkbox"/>	<input type="checkbox"/>	High	Low	Art-Net	HTP	Port 2
3	<input checked="" type="checkbox"/>	<input type="checkbox"/>	<input type="checkbox"/>	High	Low	Art-Net	HTP	Port 3
4	<input checked="" type="checkbox"/>	<input type="checkbox"/>	<input type="checkbox"/>	High	Low	Art-Net	LTP	Port 4

Port Settings

The settings for each DMX port can be configured via the web-browser using the following columns:

- Port: The DMX port number
- DMX: Green shows changing data
- RDM: Tick to enable RDM
- Delta: Tick to enable delta transmission (DMX frames are only sent when network data changes)
- Universe: Set the universe (port address) for this output
- Rate: Sets the DMX refresh rate:
 - High = 24 ms frame time
 - Medium = 32 ms frame time
 - Slow = 48 ms frame time
- Protocol: Select either Art-Net or sACN control over this output
- Merge: Select HTP or LTP merge when 2 controllers send data to this port (for more information, see 'Merging' section).
- Label: Editable field for port name

DMX Workshop

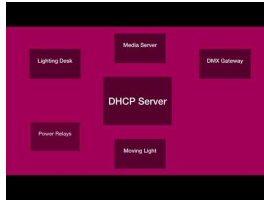


DMX-Workshop™ is a fully featured network management, analysis, configuration and diagnostics tool for lighting networks. You can download the free software from the [Artistic-Licence website](#).

When Gateway 4 is connected to a computer running DMX-Workshop, it should be detected and displayed as an Art-Net node (click the 'Node List' tab to verify this). The node can be expanded to show the configuration and DMX output information.

Right-clicking on any entry brings up a menu that offers various functionality:

- The 'Configure Node' option enables configuration of the universe number (port address), protocol (Art-Net or sACN), sACN priority, product name and port labels.
- 'Copy to clipboard' enables all the node information to be pasted into a support request email.
- 'Merge Controls' (selectable only on individual DMX outputs) enables the choice of LTP (latest takes preference) or HTP (highest takes preference) merge modes.
- 'Indicators' enables selection of normal, identify or mute for the LED indicators. Normal is the default behaviour, identify causes the power LED to flash, and mute turns off all the LEDs.
- 'RDM Devices' offers options for device discovery and configuration.
- 'Advanced' leads to 'Programme Upload' and 'Configure IP Address and DHCP'.



IP Address Configuration

Choosing the 'Configure IP Address' in the 'Advanced' menu brings up a window that shows the IP and Subnet Mask.

The IP uniquely identifies any nodes or controllers on a network, while the Subnet Mask defines which part of the IP represents the network address and which part represents the node address. For example, a Subnet Mask of 255.0.0.0 means that the first byte of the IP defines the network address and the remaining 3 bytes define the Node address.

By default, the product has a static IP address in the range 2.x.x.x. There are situations in which the user may wish to change this - for example, a 192.168.x.x address is generally used in office environments.

A useful additional feature is the ability to enable automatic IP address allocation on networks controlled by a DHCP server (check the 'Enable DHCP' box to activate).

Squawk

On a complicated network it is not always easy to relate what is showing on screen to the physical location of the nodes. A single press of the factory reset button on Gateway 4 causes the product to send a message over the network to the console.

LED Indication

Die individuellen LED-Anzeigen der DMX-Ausgänge auf der Vorderseite zeigen den Betriebsstatus an. Im normalen Betrieb leuchten die LED's grün, um die DMX-Aktivität anzuzeigen.

Online

- Grün: Live-Verbindung zwischen Webbrowser & Gateway 4
- Rot: Verbindung unterbrochen

Power

- Grün: Netzspannung liegt an
- Grün blinkend: Identifizierung
- Rot: Fehler

Netzwerk

- Gelb: Link
- Grün: ArtNet- oder sACN-Aktivität

Mechanical

Always observe the operating environment information. If this environment is exceeded, it is likely that damage will occur to your Gateway 4.

- Height: 77.5mm
- Width: 150mm
- Depth: 66.2mm
- Weight: 0.8kg
- Operating Temperature: 0°C to 40°C
- Storage Temperature: -10°C to +50°C
- Operating Relative Humidity (max): 80% Non Condensing
- IP Rating: IP20 Indoor Use Only

Support

Support requests can be submitted through our support forum at zero88.com/forum or via email to support@zero88.com

For more urgent requests, please contact Zero 88 by telephone on +44 (0)1633 838088 – 24 hour answer service available.